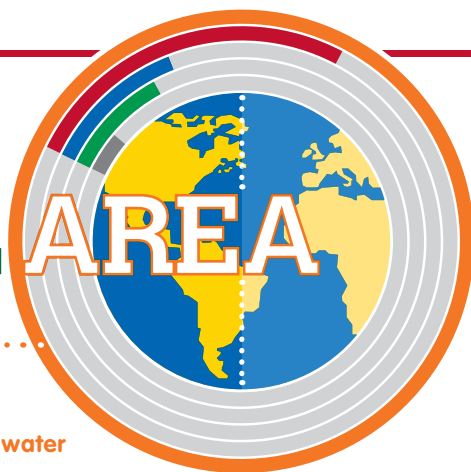


Earth's SURFACE AREA

196.9

million square miles:

TOTAL SURFACE AREA of Earth, including water



50.3

million square miles

TOTAL LAND

23.4

million square miles

46.5%: UNDEVELOPED

19.4

million square miles

38.6%: AGRICULTURE

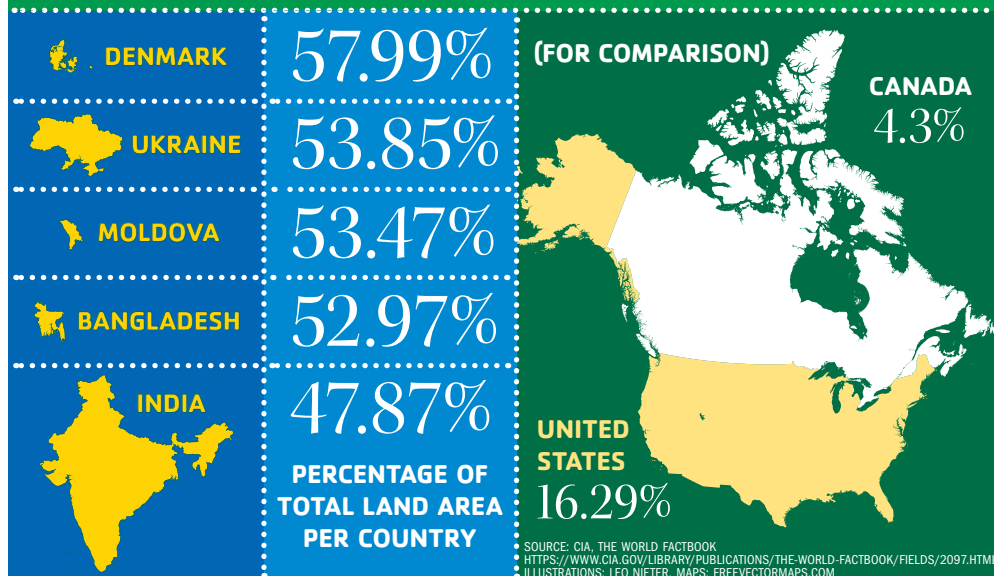
7.5

million square miles

14.9%: OTHER

SOURCE: NATIONALGEOGRAPHIC.COM HTTP://WWW.NATIONALGEOGRAPHIC.COM/FOODFEATURES/FEEDING-9-BILLION

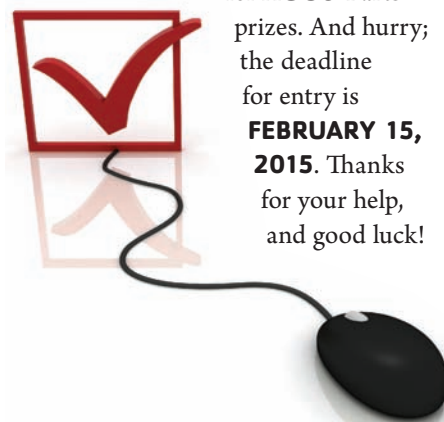
ARABLE LAND Top 5 Countries:



WIN A \$50 Gift Card

IF YOU HAVE 10 MINUTES for an online survey, you might just win one of 10 \$50 AGCO Parts gift cards! And, you'll be helping the *FarmLife* magazine staff provide you with the best and most interesting articles for your farm or business. It's easy: Just go to myFarmLife.com/survey and answer a few questions. Take this issue with you to your computer and flip through as you take the survey. Be sure to add your name, address and e-mail so we can enter you into the drawing

for AGCO Parts prizes. And hurry; the deadline for entry is **FEBRUARY 15, 2015**. Thanks for your help, and good luck!



4.4 Degrees Fahrenheit that California's winter temperature was above average. While it seemed that the rest of North America was in a deep freeze, last winter was the warmest on record for the state.

0.3 The percentage growth of first-quarter 2014 Canadian GDP. The harsh winter was blamed for the anemic number, which was significantly slower than the 0.7% of the previous three months. GDP was even worse in the U.S., declining 2.1%.

1,254 The number of accidents blamed on the Jan. 29, 2014, storm that dumped 2.6 inches of ice and snow on the area around Atlanta, Ga. Some motorists spent as much as 16 hours stranded in their vehicles, enduring sub-freezing temperatures, during and after the storm.

2015 According to The Old Farmer's Almanac, which predicted last year's Winter-agedden, expect more "shivery and shovelry." The publication says "no region will see prolonged spells of above-normal temperatures; only near the West and East coasts will temperatures average close to normal."